



...WHERE CLOUDS TOUCH THE EARTH

Koonjewarre (pronounced koon-gee-warr-ee), a term used by the indigenous Yugambah people and translates to "Meeting place on high ground..." perfectly describing this unique accommodation centre in the high country of Springbrook where the "Clouds Touch the Earth"!

KOONJEWARRE

ACCOMMODATION & ACTIVITY CENTRE

Offering

- Accommodation from 20 to 130 People
- Exclusive Occupancy for Your Group
- Professional Catering (No Self-Catering)
- Outdoor Education
- Spectacular Gold Coast Hinterland World Heritage Area
- All profits benefit Springbrook rainforest restoration and protection

Contacts

Landline 07 55335121

Mob 0448856845

info@koonjewarre.com

www.koonjewarre.com

Our Management & Caretaker team can guarantee exceptional and friendly service. We are committed to providing you a truly memorable "Koonjewarre" experience enriched by the stunning beauty and uniqueness of the Gondwana Rainforests of Australia World Heritage Area.

WELCOME



The Australian Rainforest Conservation Society welcomes you to Koonjewarre.

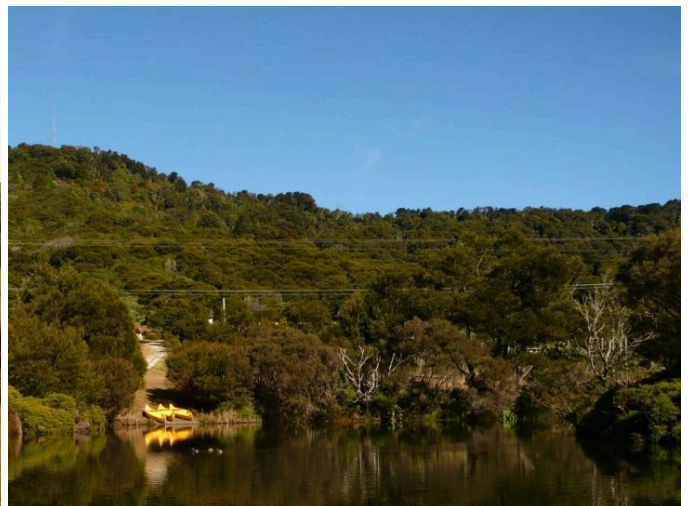
Founded in 1982, the Australian Rainforest Conservation Society (ARCS) is a national, non-government, not-for-profit organisation with headquarters in Brisbane. Its goals are to protect, repair and restore the rainforests of Australia through research, lobbying, public education and grass-roots support.

ARCS has succeeded in achieving protection for large areas of Australia's rainforests and continues to play a leading role in the ongoing work required to conserve this rainforest heritage.

Go to rainforest.org.au for more information.

All 'profits' from your booking at Koonjewarre are used for ongoing work by ARCS to regenerate World-Heritage rainforest on Springbrook plateau.

To learn more about the restoration project, go to www.springbrookrescue.org.au



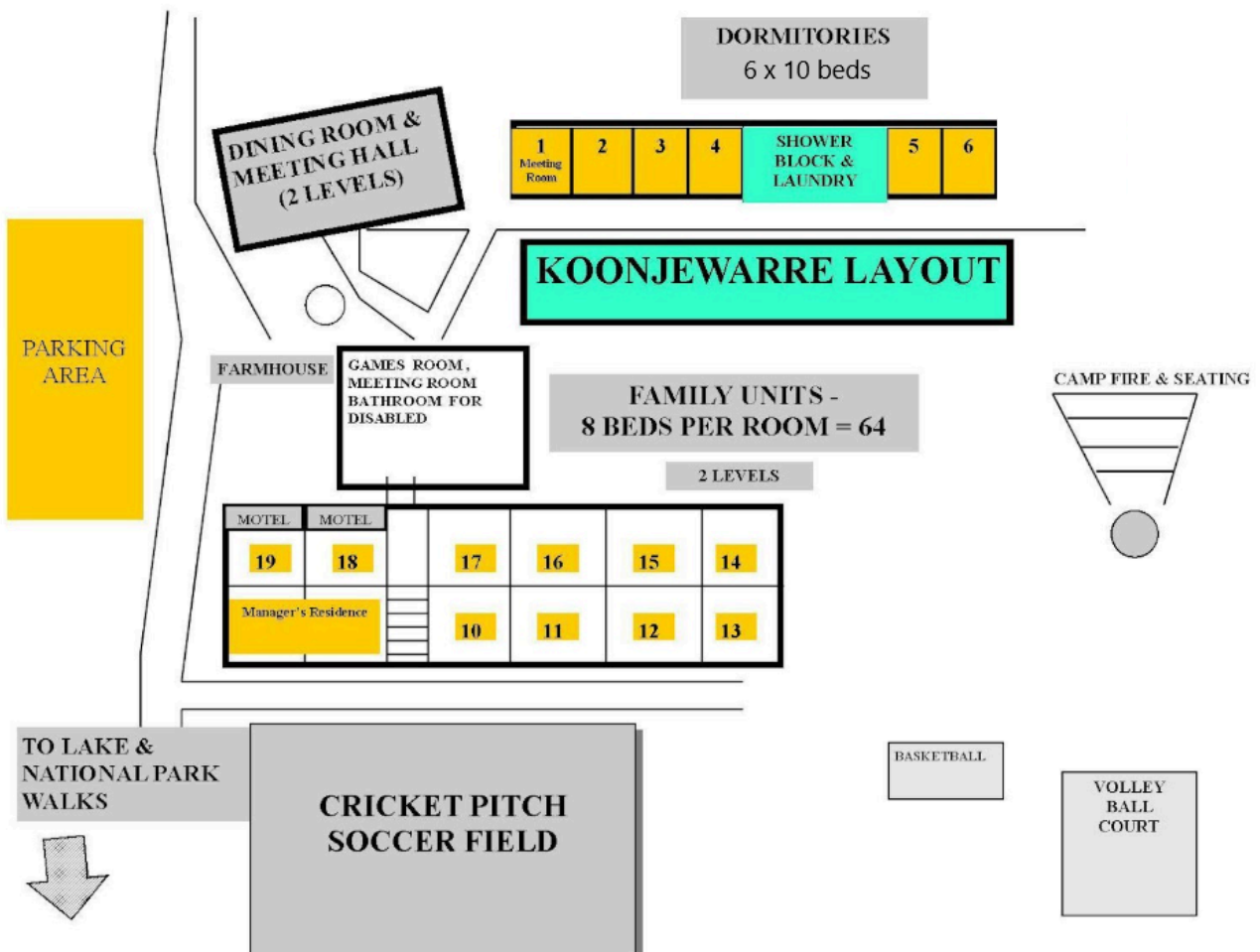
LEFT: Koonjewarre in 1975 and RIGHT: in 2016 showing the rapid recovery of rainforest when protected.



WHAT WE OFFER YOUR GROUP

- **NO SHARING WITH OTHER GROUPS** Privacy through your group's exclusive use of all Koonjewarre's facilities at one inclusive price. No other groups and no extra charges. It's all yours
- Wheel-chair access to all buildings, and disabled toilet & shower
- A diverse choice of menus made from fresh ingredients to fit any budget or special dietary needs ... leaving you fulfilled and pleased
- Indoor recreational and workshop opportunities with hall, stage and audio-visual facilities for dance, film, drama, concert, wedding, or party functions
- Diverse outdoor sporting and recreation opportunities conducive to fitness, health and wellbeing
- Ready access to a large network of National Park walking tracks
- An opportunity to experience the wonder, splendour and tranquillity of Springbrook 'The Jewel in Queensland's World Heritage Crown'
- We also have no objection to the responsible consumption of alcohol
- We pride ourselves on being flexibly responsive to all your needs.
- **We work to your program and timetable**

Koonjewarre Site Plan



PRICE LIST

Accommodation

- Groups will have use of Family Units (64pp) and Motels by default.
- For larger groups overflow will be assigned to the Dormitory block (max 60pp)
 - Price per person per night \$30
 - End of camp cleaning fee \$160

Catering

- 1 Day = 3 meals (morning tea & afternoon tea are included free)
- Tea & Coffee available at all times
- Category A. Groups of 31+ \$60 per day (i.e. \$20 per main meal)
- Category B. Groups of 20-30 \$66 per day (i.e. \$22 per main meal)

Please note!

- all our menus are flexible to your needs
- we are happy to discuss any menu suggestions though prices may vary
- all special diets are catered for with equal care and consideration but incur a \$3 surcharge per meal
- campers are expected to wash their own dishes or can pay for them to be done

Linen Hire

Please note! Two weeks advance booking required

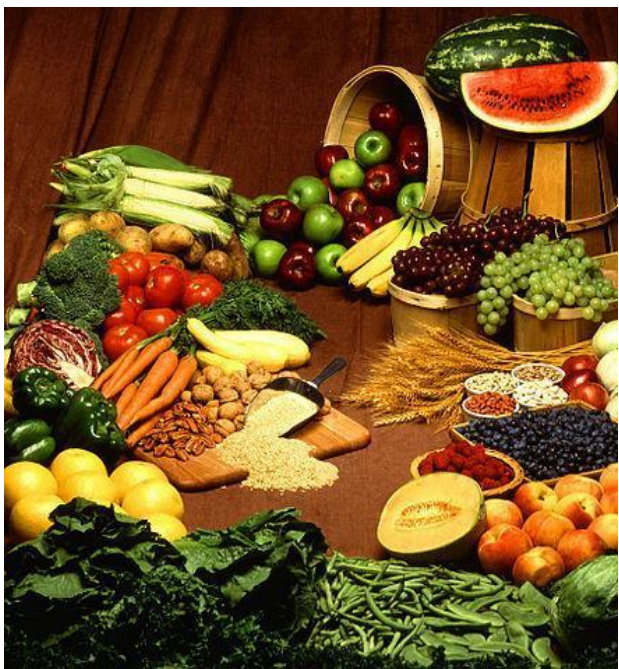
- 2 Sheets, Pillow, Pillowcase, Blankets & Towel add \$45 for full stay

CATERING AT KOONJEWARRE

Our resident Caterer is David Porter. For more than 40 years David has worked in the hospitality industry in London, New Zealand and Australia.

David's experience extends from location catering in the film industry through to large scale corporate catering, banqueting and conventions. David was also Chef Manager at London's prestigious Dorchester Hotel.

David's catering acumen is married to his passion for excellence in all aspects of food creation and he takes particular pleasure in meeting a challenge. David grew up in Libya, South-East Asia and Australia, and has developed a deep understanding and knowledge of the varied cuisines of the world. As a result of his experience he offers a variety of food choices, guaranteeing the success of your camp, function or event.



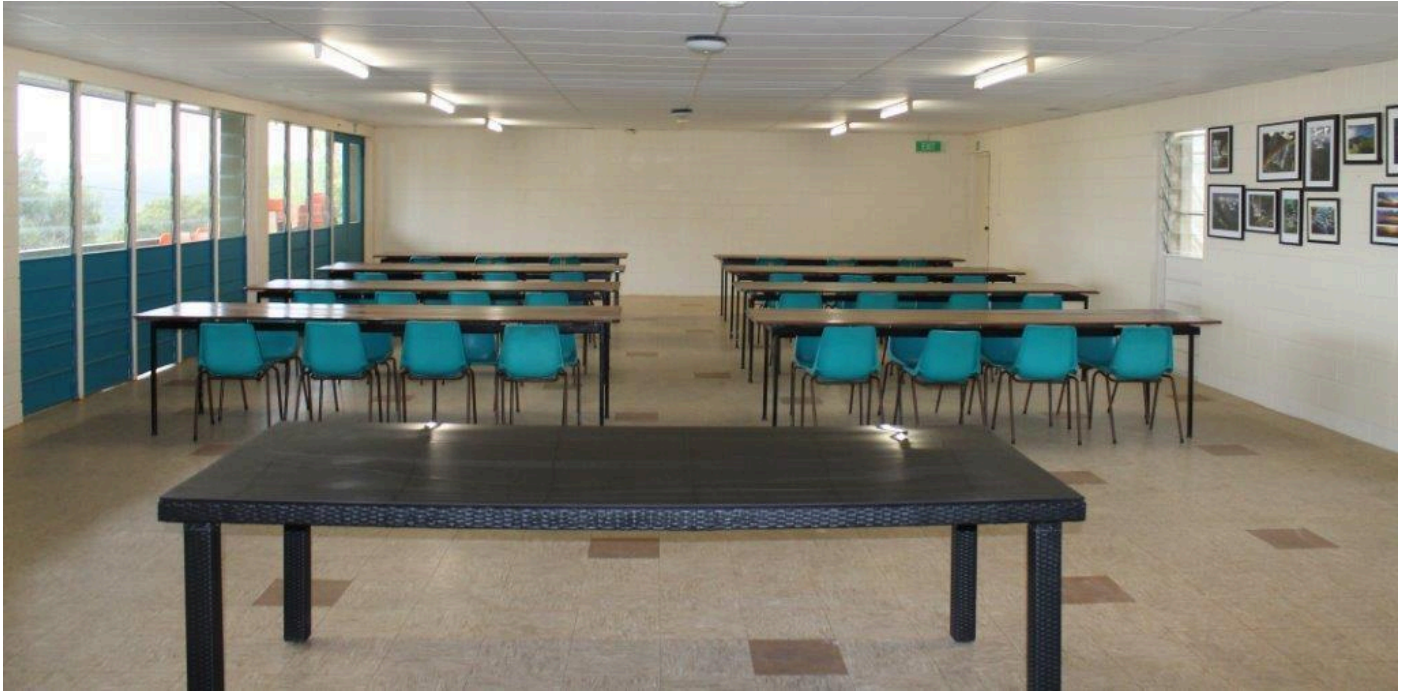
At Koonjewarre we have a 'Standard Menu', a 'Weekend Vegetarian or Meat Menu' but any menu can be catered for. Many of our clients require a Vegetarian or Vegan menu, some Halal (all our beef and chicken is certified), Asian, Middle-Eastern and Indian or just something a bit more special.

We are open to all suggestions and take pride in meeting our clients' needs. Koonjewarre's kitchen operates to the highest standard of hygiene and safety, with an on-going Food Safety Plan which ensures that you can be assured of not only the best and safest, but most importantly freshly made and delicious food.

THE MEETING HALL



DINING HALL



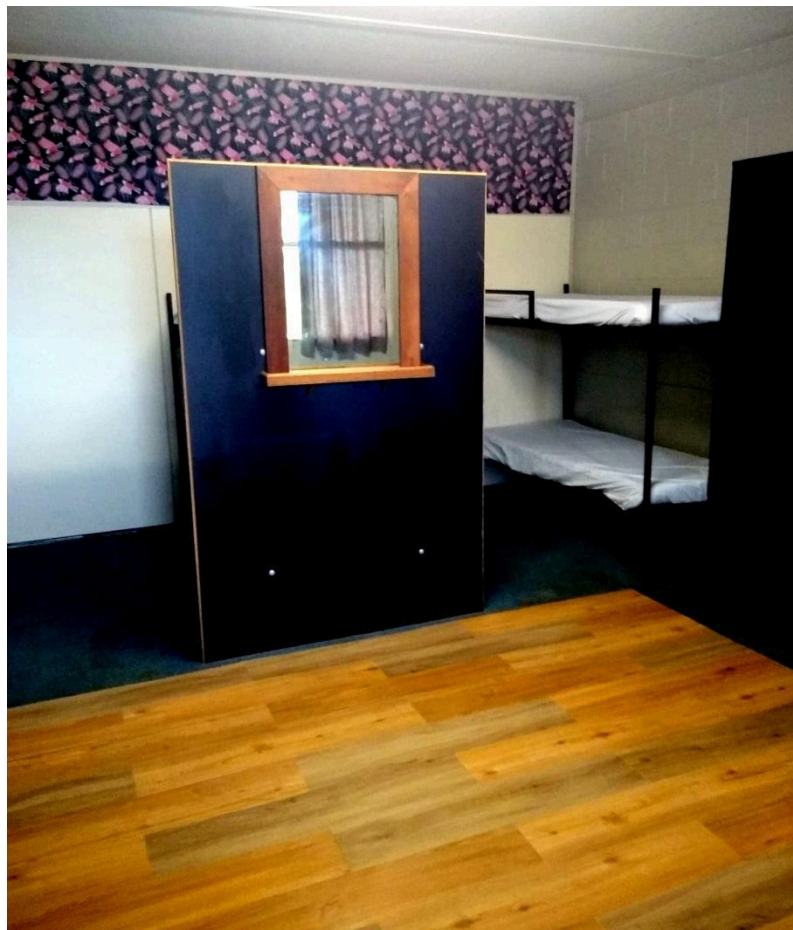
MOTEL ROOMS X 2



FAMILY UNITS WITH ENSUITE X 8 (64 BEDS)



DORMITORIES X 6 (60 BEDS)



SMALL MEETING ROOM



THE FARMHOUSE



SMALL CONFERENCE ROOM



LAGOON FOR SWIMMING OR CANOEING



ORGANISED PROGRAMS

can be arranged with our partner activity company

'SPORTS TUITION'

www.sportstuition.com.au

provides professional trainers to organise & run your program

Phone Steve Wilkes on 0403154510 and he will work with you to create a program which suits your needs

INITIATIVE & PROBLEM SOLVING

1. ORIENTEERING
2. INITIATIVE GAMES
3. DAMPER MAKING
4. TEAM-BUILDING
5. PROBLEM SOLVING TASKS



SPORT

1. CANOEING
2. RAFT BUILDING
3. ARCHERY

ENVIRONMENT

1. GLOW WORMS TOURS
2. BUSH WALKS



OUR ON-SITE ACTIVITIES ARE FREE

- SOCCER FIELD, BASKETBALL, VOLLEYBALL,
- CRICKET, TABLE TENNIS TABLE,
- CANOES, SLIPPERY-SLIDE
- AND FIRE PIT FOR NIGHT-TIME FUN
- ALL SPORTING EQUIPMENT IS PROVIDED AND IS AVAILABLE FOR YOUR USE



THE LARGE AND SMALL FIRE PITS

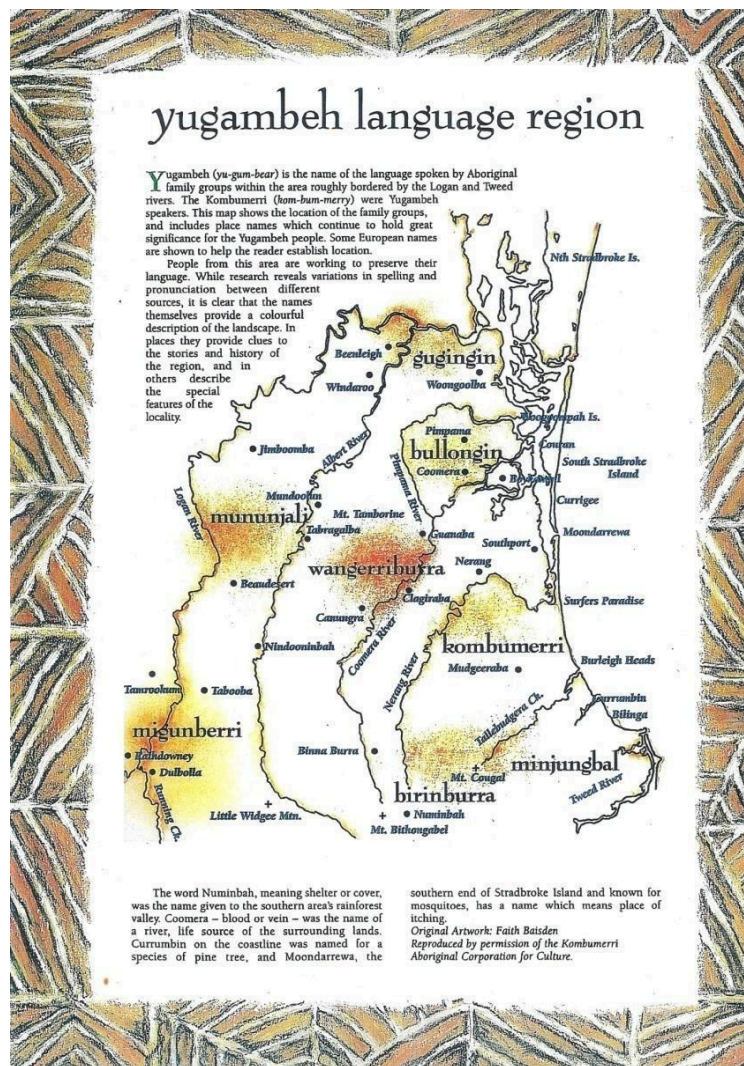


WELCOME TO COUNTRY

Koonjewarre is situated on Narangwal land and is part of the greater Yugambeh Country

If you would like to respect and be welcomed in the traditional manner

Yugambeh dancers, musicians & cultural activities can be arranged by calling Luther Cora
0429499183 luthercora@bigpond.com



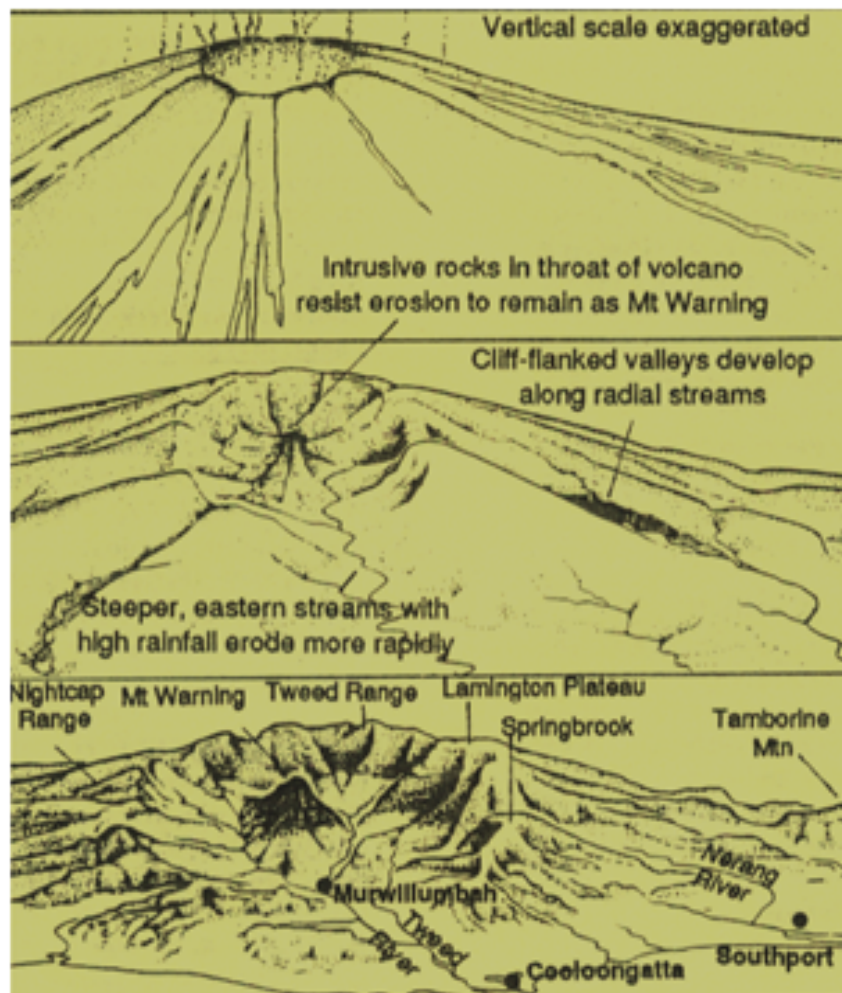
SPRINGBROOK NATIONAL PARK

Koonjewarre is actually on Parks Service land purchased for regeneration and managed under a lease to the Australian Rainforest Conservation Society to generate profits which pay for regeneration of rainforest throughout newly acquired Parks land on Springbrook.

National Parks walking tracks entrance is just 300 metres down the road. The park covers 2954 ha and preserves rainforests & eucalypt forests in the cliff-lined headwaters of rivers and creeks.

Springbrook Plateau is part of a huge extinct volcano centred on Mt Warning. It has World Heritage significance as the best preserved shield volcano for its age in the world. The last eruption occurred more than 22 million years ago, and Springbrook's southern cliffs continue in a great circle into New South Wales marking the rim of that ancient volcanic crater.

The outline of the volcano can be seen in all its spectacular grandeur from Best Of All Lookout, which is above Koonjewarre at the end of Repeater Station Road.



WALKING TRACKS ON SPRINGBROOK PLATEAU



There are 26 km of walking tracks in close proximity to Koonjearre, ranging from the short 1 km Twin Waterfalls track to a 4 km circuit walk, and a 17 km extended circuit.

Throughout Springbrook, waterfalls, rock pool and glow worm caves are set in rainforest which displays tall trees, Antarctic Beech forest, ferns, palms, orchids, vines & mosses. Magnificent cliffs and waterfalls, abundant fauna & bird life, and unparalleled views add splendour to the tranquility of this wild area.

Maps and information are available from the Koonjearre Manager.

TWIN FALLS CIRCUIT (4km return) Allow 1.5- 2 hours.

Commence this walk from Tallanbana picnic area which is located about 400m north of Koonjearre. Groups walking along the road should be aware that there is no footpath and the road is narrow and windy meaning motorist's visibility of pedestrians can be poor.

Follow the track in an anti-clockwise direction to take advantage of the interpretive signs which guide the walker through different forest types. Pass behind two waterfalls, through rock clefts and enjoy the large natural rock pool among palms and fern trees. At night this walk is alive with glow worms, but make sure everyone has a torch.

If you choose to walk a group to the Twin Falls walk at night, it is strongly recommended that you position staff members at both the front and rear of your group wearing reflective high visibility vests and each with a bright torch to signal motorists.

WARRIE CIRCUIT (17km return) Allow 5-6 hours.

Commence at Canyon Lookout which is 1 km north of Koonjearre. The longest and most interesting track on the plateau, it follows the base of the Canyon cliffs to Goomoolahra Falls before descending into the mossy green depths of the rainforest. The track goes to the Meeting of the Waters where all watercourses draining the canyon join, then climbs up the western side of the gorge. Take a backpack with food & drink, first-aid kit, camera and binoculars for a memorable day. Average fitness required.

PURLINGBROOK FALLS CIRCUIT (4km return) Allow 2-3 hours.

Beginning at the park at the end of Forestry Road 6Km north of Koonjearre. Walkers pass through open eucalypt forest before descending into the gorge to view the falls from below. A steady climb through forest brings the walker back to the picnic area. For the Waringa Pool track, which leads downstream from the base of the falls, add another 2km.

